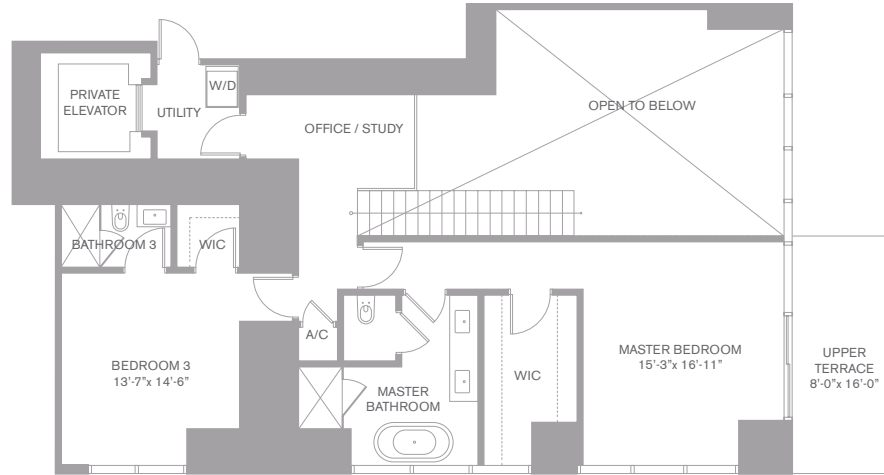


ELYSEE

MIAMI

# RESIDENCE

# G



SECOND LEVEL

### RESIDENCE FEATURES

- Private elevators and foyers
- 20 foot ceilings
- 8 foot terraces facing East (sunrise) with unobstructed views
- Units pre-wired with customizable home automation system capable of wireless control of lighting, window treatments, climate, and audio/visual systems
- Bathroom fixtures by Waterworks®
- ItalKraft® cabinetry in kitchens and baths
- Sub-Zero® built-in full size refrigerator and freezer
- Wolf® stainless steel gas cooktop, oven, and microwave
- Oversized washer and dryer
- Service and staff elevator
- Impact resistant floor-to-ceiling glass windows and sliding glass terrace doors



Floors 2 - 5

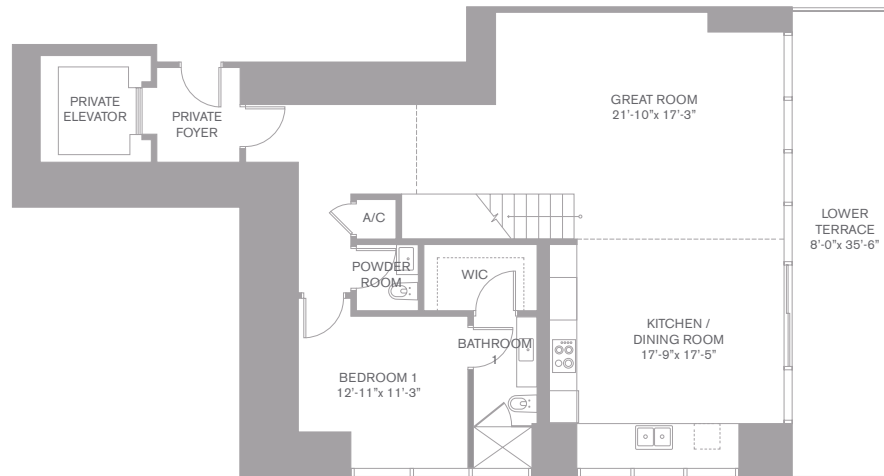


SOUTH RESIDENCE



## 3 BEDROOM 3.5 BATH SOUTH DUPLEX RESIDENCE

UNDER A/C:	2,663 SQ FT	247 M <sup>2</sup>
LOWER TERRACE:	287 SQ FT	27 M <sup>2</sup>
UPPER TERRACE:	144 SQ FT	13 M <sup>2</sup>
<b>TOTAL:</b>	<b>3,094 SQ FT</b>	<b>287 M<sup>2</sup></b>



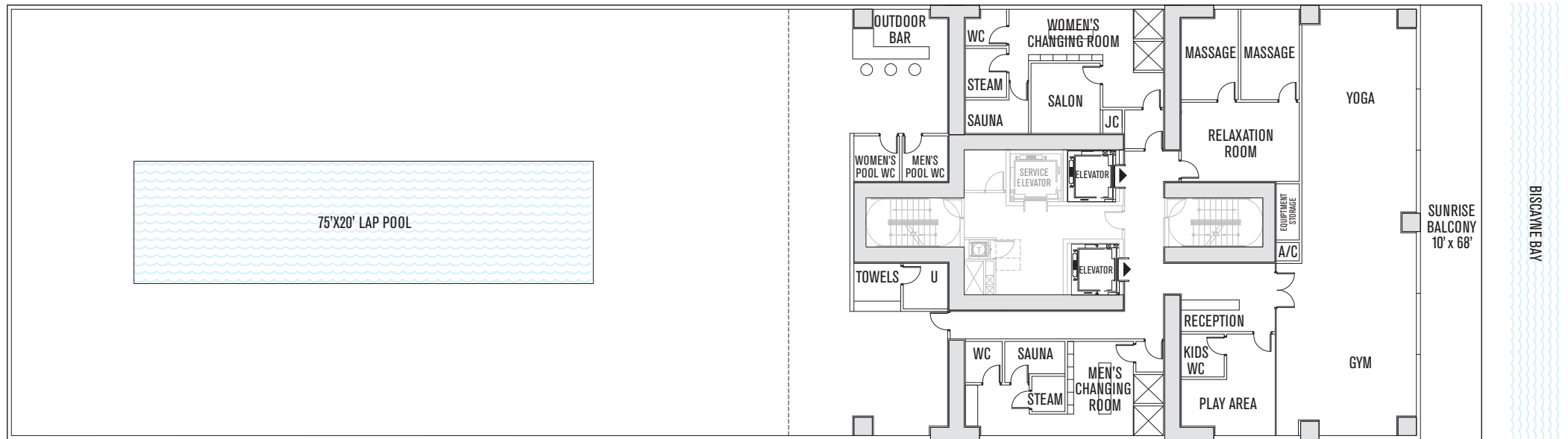
FIRST LEVEL



# SEVENTH FLOOR AMENITY LEVEL

# E L Y S E E

## MIAMI



LAP POOL | GYM | MASSAGE | YOGA | SAUNA | STEAM ROOM  
 OUTDOOR BAR | PLAY AREA | SUNRISE BALCONY



All plans, features, designs, dimensions, and other information contained or depicted herein are based upon preliminary development plans and are subject to change without notice due to field conditions and other matters. These materials do not reflect the final, as-built plans for the unit, or any room located therein, and may not be relied upon. All improvements, designs, and construction are subject to first obtaining the appropriate federal, state, and local permits and approvals for same. No guarantees or representations whatsoever are made that any plans, features, designs, or other items depicted or described herein will be provided or, if provided, will be of the same type, size, location or nature as depicted or described herein. The developer expressly reserves the right to make modifications, revisions, and changes it deems desirable in its sole and absolute discretion. This offering is made only by the prospectus for the condominium and no statement or information should be relied upon if not made in the prospectus. All architectural plans are and shall remain the property of the architect or developer and no rights are conferred hereby.

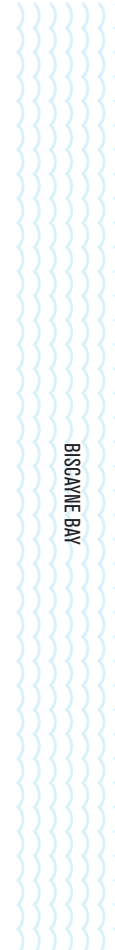
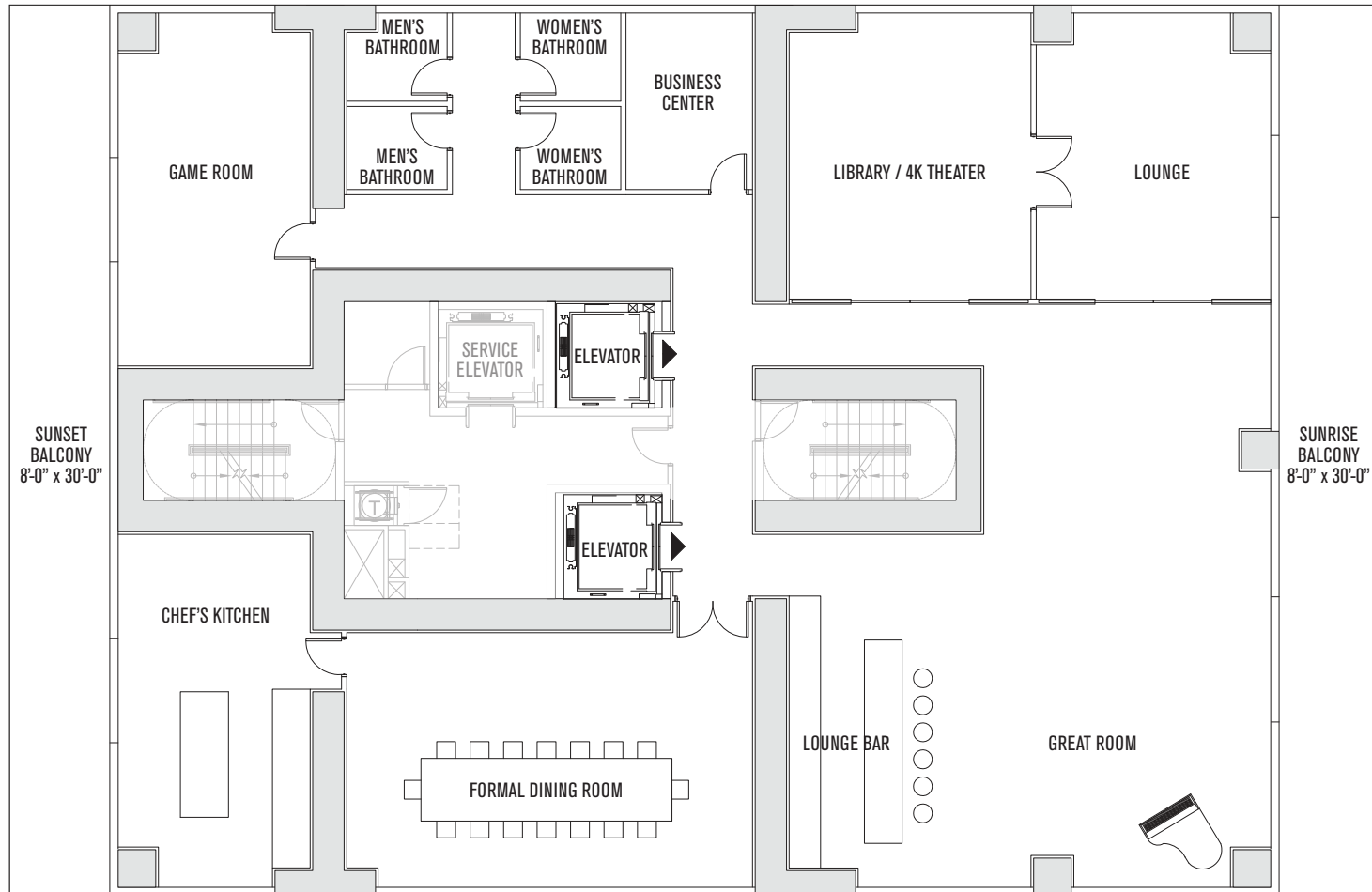
Stated square footages and dimensions are measured to the exterior boundaries of the exterior walls and the centerline of interior partitioning walls and in fact vary from the dimensions that would be determined by using the description and definition of the "Unit" set forth in the Declaration (which generally only includes the interior airspace between the perimeter walls and excludes all interior structural components and other common elements). This method is generally used in sales materials and is provided to allow a prospective buyer to compare the Units with units in other condominium projects that utilize the same method. For your reference, the area of the Unit, determined in accordance with these defined unit boundaries, is set forth above and is labeled as "A/C" (Terraces, although included in the total square footage, are not part of the Unit). Measurements of rooms set forth on this floor plan are generally taken at the farthest points of each given room (as if the room were a perfect rectangle), without regard for any cutouts or variations. Accordingly, the area of the actual room will typically be smaller than the product obtained by multiplying the stated length and width. All dimensions are estimates which will vary with actual construction, and all floor plans, specifications, and other development plans are proposed and conceptual only, which are subject to change and will not necessarily accurately reflect the final plans and specifications for the development.

ORAL REPRESENTATIONS CANNOT BE RELIED UPON AS CORRECTLY STATING THE REPRESENTATIONS OF THE DEVELOPER. FOR CORRECT REPRESENTATIONS, MAKE REFERENCE TO THIS BROCHURE AND TO THE DOCUMENTS REQUIRED BY SECTION 718.503, FLORIDA STATUTES, TO BE FURNISHED BY A DEVELOPER TO A BUYER OR LESSEE.

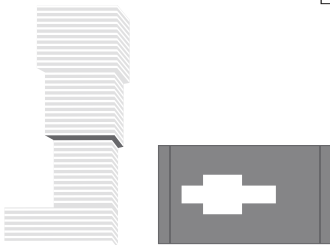
# THIRTIETH FLOOR AMENITY LEVEL

# E L Y S E E

MIAMI



GREAT ROOM | FORMAL DINING ROOM | LIBRARY / 4K THEATER | CHEF'S KITCHEN  
 BUSINESS CENTER | LOUNGE & LOUNGE BAR | GAME ROOM

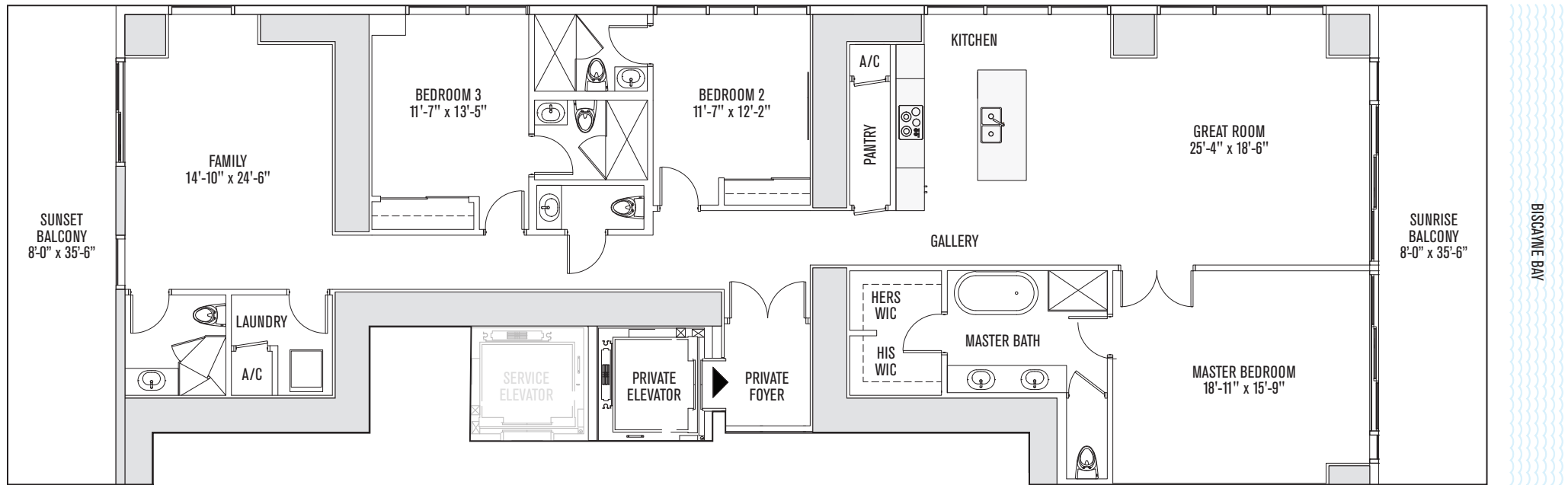


All plans, features, designs, dimensions, and other information contained or depicted herein are based upon preliminary development plans and are subject to change without notice due to field conditions and other matters. These materials do not reflect the final, as-built plans for the unit, or any room located therein, and may not be relied upon. All improvements, designs, and construction are subject to first obtaining the appropriate federal, state, and local permits and approvals for same. No guarantees or representations whatsoever are made that any plans, features, designs, or other items depicted or described herein will be provided or, if provided, will be of the same type, size, location or nature as depicted or described herein. The developer expressly reserves the right to make modifications, revisions, and changes it deems desirable in its sole and absolute discretion. This offering is made only by the prospectus for the condominium and no statement or information should be relied upon if not made in the prospectus. All architectural plans are and shall remain the property of the architect or developer and no rights are conferred hereby.

Stated square footages and dimensions are measured to the exterior boundaries of the exterior walls and the centerline of interior partitioning walls and in fact vary from the dimensions that would be determined by using the description and definition of the "Unit" set forth in the Declaration (which generally only includes the interior airspace between the perimeter walls and excludes all interior structural components and other common elements). This method is generally used in sales materials and is provided to allow a prospective buyer to compare the Units with units in other condominium projects that utilize the same method. For your reference, the area of the Unit, determined in accordance with these defined unit boundaries, is set forth above and is labeled as "AC" (Terraces, although included in the total square footage, are not part of the Unit). Measurements of rooms set forth on this floor plan are generally taken at the farthest points of each given room (as if the room were a perfect rectangle), without regard for any cutouts or variations. Accordingly, the area of the actual room will typically be smaller than the product obtained by multiplying the stated length and width. All dimensions are estimates which will vary with actual construction, and all floor plans, specifications, and other development plans are proposed and conceptual only, which are subject to change and will not necessarily accurately reflect the final plans and specifications for the development.

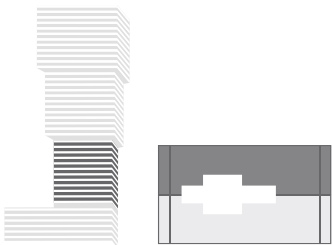
ORAL REPRESENTATIONS CANNOT BE RELIED UPON AS CORRECTLY STATING THE REPRESENTATIONS OF THE DEVELOPER. FOR CORRECT REPRESENTATIONS, MAKE REFERENCE TO THIS BROCHURE AND TO THE DOCUMENTS REQUIRED BY SECTION 718.503, FLORIDA STATUTES, TO BE FURNISHED BY A DEVELOPER TO A BUYER OR LESSEE.

3 BEDROOMS / 3.5 BATHROOMS  
(CONVERTIBLE TO 4 OR 5 BEDROOMS)



3 BEDROOMS | 3.5 BATHROOMS | GREAT ROOM | FAMILY ROOM | KITCHEN  
SUNRISE & SUNSET BALCONIES | PRIVATE ELEVATOR | PRIVATE FOYER

ENCLOSED AREA:	2,850 SQ FEET	265 SQ METERS
BALCONY AREA:	568 SQ FEET	53 SQ METERS
TOTAL AREA:	3,418 SQ FEET	318 SQ METERS

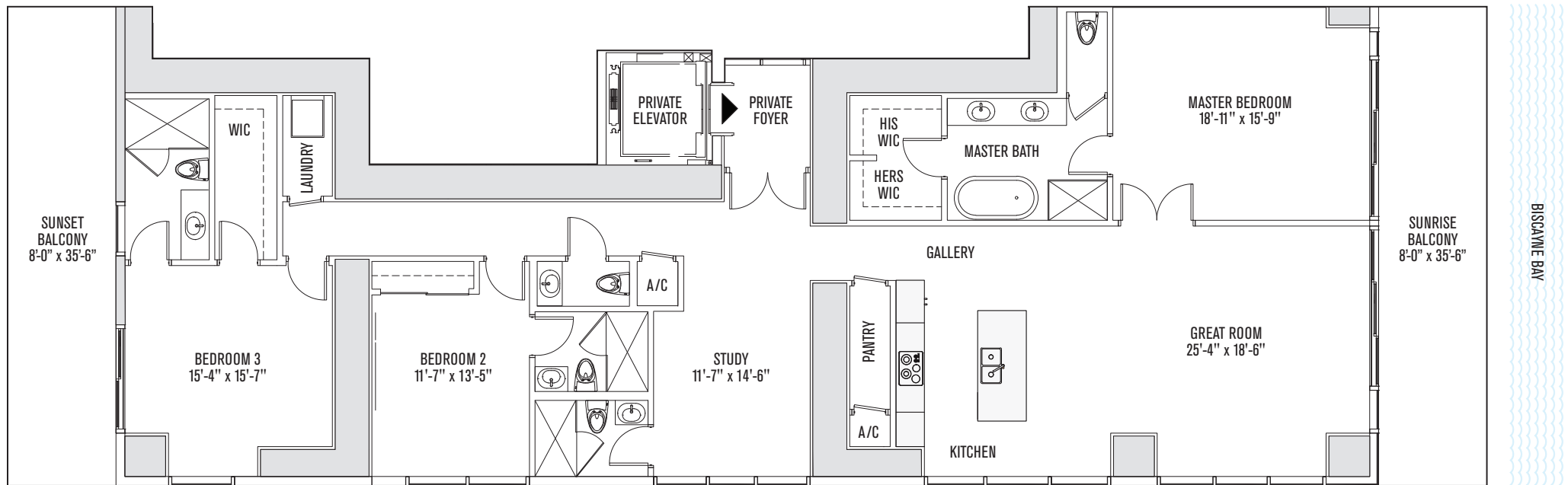


All plans, features, designs, dimensions, and other information contained or depicted herein are based upon preliminary development plans and are subject to change without notice due to field conditions and other matters. These materials do not reflect the final, as-built plans for the unit, or any room located therein, and may not be relied upon. All improvements, designs, and construction are subject to first obtaining the appropriate federal, state, and local permits and approvals for same. No guarantees or representations whatsoever are made that any plans, features, designs, or other items depicted or described herein will be provided or, if provided, will be of the same type, size, location or nature as depicted or described herein. The developer expressly reserves the right to make modifications, revisions, and changes it deems desirable in its sole and absolute discretion. This offering is made only by the prospectus for the condominium and no statement or information should be relied upon if not made in the prospectus. All architectural plans are and shall remain the property of the architect or developer and no rights are conferred hereby.

Stated square footages and dimensions are measured to the exterior boundaries of the exterior walls and the centerline of interior partitioning walls and in fact vary from the dimensions that would be determined by using the description and definition of the "Unit" set forth in the Declaration (which generally only includes the interior airspace between the perimeter walls and excludes all interior structural components and other common elements). This method is generally used in sales materials and is provided to allow a prospective buyer to compare the Units with units in other condominium projects that utilize the same method. For your reference, the area of the Unit, determined in accordance with these defined unit boundaries, is set forth above and is labeled as "A/C" (terraces, although included in the total square footage, are not part of the Unit). Measurements of rooms set forth on this floor plan are generally taken at the farthest points of each given room (as if the room were a perfect rectangle), without regard for any cutouts or variations. Accordingly, the area of the actual room will typically be smaller than the product obtained by multiplying the stated length and width. All dimensions are estimates which will vary with actual construction, and all floor plans, specifications, and other development plans are proposed and conceptual only, which are subject to change and will not necessarily accurately reflect the final plans and specifications for the development.

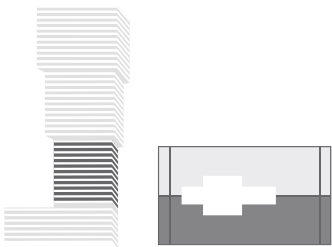
ORAL REPRESENTATIONS CANNOT BE RELIED UPON AS CORRECTLY STATING THE REPRESENTATIONS OF THE DEVELOPER. FOR CORRECT REPRESENTATIONS, MAKE REFERENCE TO THIS BROCHURE AND TO THE DOCUMENTS REQUIRED BY SECTION 718.503, FLORIDA STATUTES, TO BE FURNISHED BY A DEVELOPER TO A BUYER OR LESSEE.

3 BEDROOMS / 4.5 BATHROOMS  
(CONVERTIBLE TO 4 OR 5 BEDROOMS)



3 BEDROOMS | 4.5 BATHROOMS | GREAT ROOM | STUDY | KITCHEN  
SUNRISE & SUNSET BALCONIES | PRIVATE ELEVATOR | PRIVATE FOYER

ENCLOSED AREA:	2,860 SQ FEET	266 SQ METERS
BALCONY AREA:	568 SQ FEET	53 SQ METERS
TOTAL AREA:	3,428 SQ FEET	319 SQ METERS



All plans, features, designs, dimensions, and other information contained or depicted herein are based upon preliminary development plans and are subject to change without notice due to field conditions and other matters. These materials do not reflect the final, as-built plans for the unit, or any room located therein, and may not be relied upon. All improvements, designs, and construction are subject to first obtaining the appropriate federal, state, and local permits and approvals for same. No guarantees or representations whatsoever are made that any plans, features, designs, or other items depicted or described herein will be provided or, if provided, will be of the same type, size, location or nature as depicted or described herein. The developer expressly reserves the right to make modifications, revisions, and changes it deems desirable in its sole and absolute discretion. This offering is made only by the prospectus for the condominium and no statement or information should be relied upon if not made in the prospectus. All architectural plans are and shall remain the property of the architect or developer and no rights are conferred hereby.

Stated square footages and dimensions are measured to the exterior boundaries of the exterior walls and the centerline of interior dividing walls and in fact vary from the dimensions that would be determined by using the description and definition of the "Unit" set forth in the Declaration (which generally only includes the interior airspace between the perimeter walls and excludes all interior structural components and other common elements). This method is generally used in sales materials and is provided to allow a prospective buyer to compare the Units with units in other condominium projects that utilize the same method. For your reference, the area of the Unit, determined in accordance with these defined unit boundaries, is set forth above and is labeled as "A/C" (Terraces, although included in the total square footage, are not part of the Unit). Measurements of rooms set forth on this floor plan are generally taken at the farthest points of each given room (as if the room were a perfect rectangle), without regard for any cutouts or variations. Accordingly, the area of the actual room will typically be smaller than the product obtained by multiplying the stated length and width. All dimensions are estimates which will vary with actual construction, and all floor plans, specifications, and other development plans are proposed and conceptual only, which are subject to change and will not necessarily accurately reflect the final plans and specifications for the development.

ORAL REPRESENTATIONS CANNOT BE RELIED UPON AS CORRECTLY STATING THE REPRESENTATIONS OF THE DEVELOPER. FOR CORRECT REPRESENTATIONS, MAKE REFERENCE TO THIS BROCHURE AND TO THE DOCUMENTS REQUIRED BY SECTION 718.503, FLORIDA STATUTES, TO BE FURNISHED BY A DEVELOPER TO A BUYER OR LESSEE.

# FLOORS 31-45

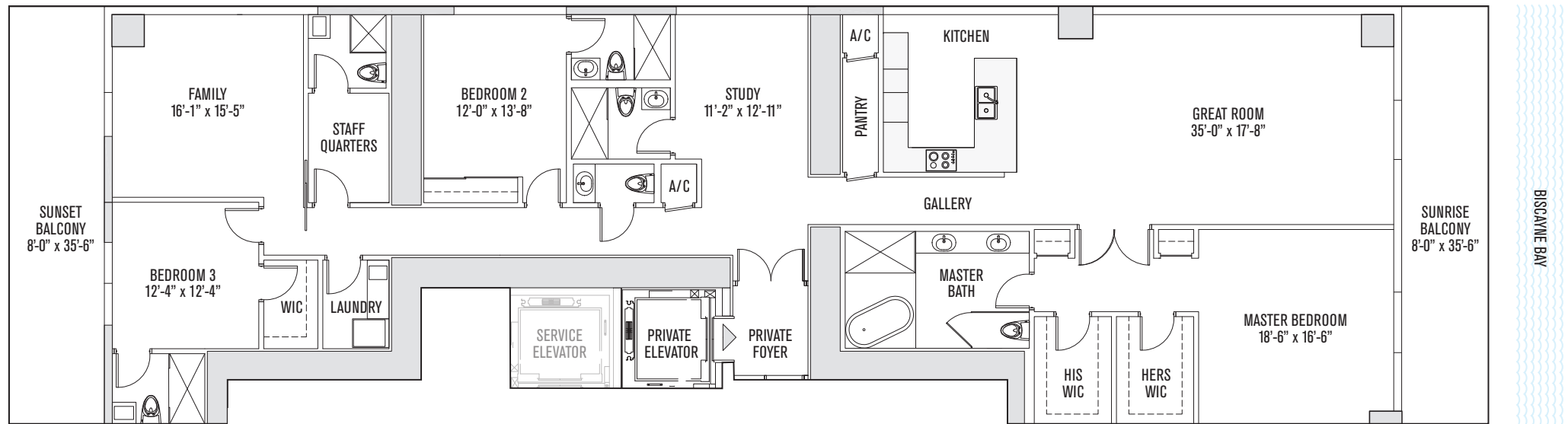
## NORTH EAST RESIDENCE

# E L Y S E E

## MIAMI

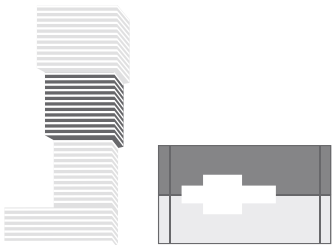
### 3 BEDROOMS / 4.5 BATHROOMS

(CONVERTIBLE TO 4 OR 5 BEDROOMS)



3 BEDROOMS | 4.5 BATHROOMS | GREAT ROOM | FAMILY ROOM | STUDY | KITCHEN | STAFF QUARTERS  
 SUNRISE & SUNSET BALCONIES | PRIVATE ELEVATOR | PRIVATE FOYER

ENCLOSED AREA:	3,412 SQ FEET	317 SQ METERS
BALCONY AREA:	568 SQ FEET	53 SQ METERS
TOTAL AREA:	3,980 SQ FEET	370 SQ METERS



All plans, features, designs, dimensions, and other information contained or depicted herein are based upon preliminary development plans and are subject to change without notice due to field conditions and other matters. These materials do not reflect the final, as-built plans for the unit, or any room located therein, and may not be relied upon. All improvements, designs, and construction are subject to first obtaining the appropriate federal, state, and local permits and approvals for same. No guarantees or representations whatsoever are made that any plans, features, designs, or other items depicted or described herein will be provided or, if provided, will be of the same type, size, location or nature as depicted or described herein. The developer expressly reserves the right to make modifications, revisions, and changes it deems desirable in its sole and absolute discretion. This offering is made only by the prospectus for the condominium and no statement or information should be relied upon if not made in the prospectus. All architectural plans are and shall remain the property of the architect or developer and no rights are conferred hereby.

Stated square footages and dimensions are measured to the exterior boundaries of the exterior walls and the centerline of interior partitioning walls and in fact vary from the dimensions that would be determined by using the description and definition of the "Unit" set forth in the Declaration (which generally only includes the interior airspace between the perimeter walls and excludes all interior structural components and other common elements). This method is generally used in sales materials and is provided to allow a prospective buyer to compare the Units with units in other condominium projects that utilize the same method. For your reference, the area of the Unit, determined in accordance with these defined unit boundaries, is set forth above and is labeled as "A/C" (terraces, although included in the total square footage, are not part of the Unit). Measurements of rooms set forth on this floor plan are generally taken at the farthest points of each given room (as if the room were a perfect rectangle), without regard for any cutouts or variations. Accordingly, the area of the actual room will typically be smaller than the product obtained by multiplying the stated length and width. All dimensions are estimates which will vary with actual construction, and all floor plans, specifications, and other development plans are proposed and conceptual only, which are subject to change and will not necessarily accurately reflect the final plans and specifications for the development.

ORAL REPRESENTATIONS CANNOT BE RELIED UPON AS CORRECTLY STATING THE REPRESENTATIONS OF THE DEVELOPER. FOR CORRECT REPRESENTATIONS, MAKE REFERENCE TO THIS BROCHURE AND TO THE DOCUMENTS REQUIRED BY SECTION 718.503, FLORIDA STATUTES, TO BE FURNISHED BY A DEVELOPER TO A BUYER OR LESSEE.

# FLOORS 31-45

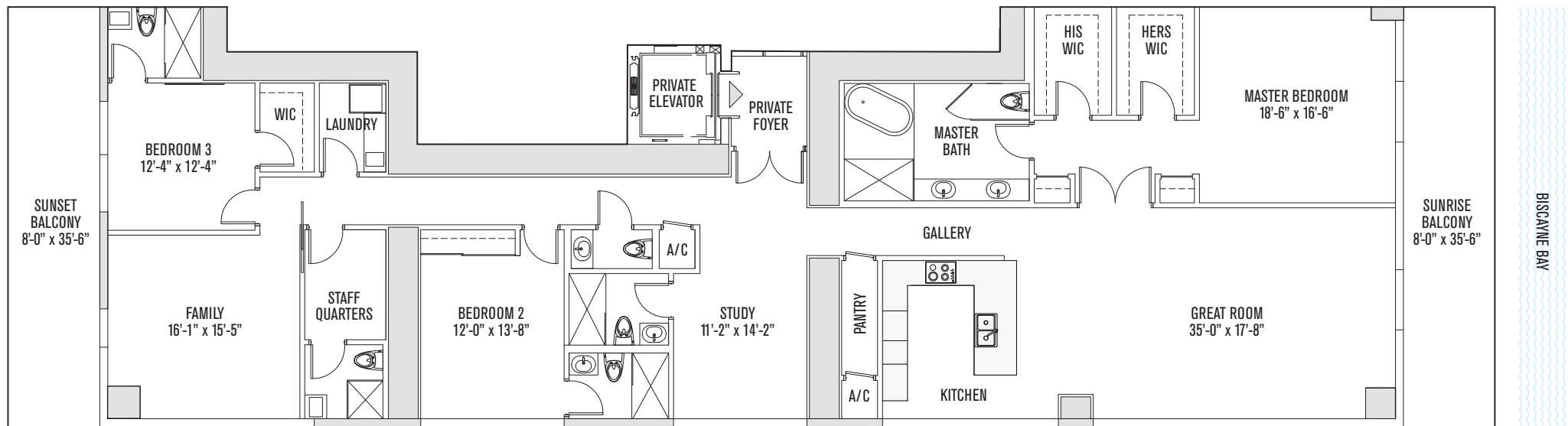
SOUTH EAST RESIDENCE

# E L Y S E E

MIAMI

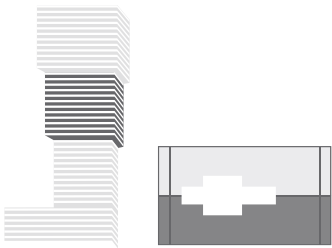
## 3 BEDROOMS / 5.5 BATHROOMS

(CONVERTIBLE TO 4 OR 5 BEDROOMS)



3 BEDROOMS | 5.5 BATHROOMS | GREAT ROOM | STUDY | KITCHEN | STAFF QUARTERS  
 SUNRISE & SUNSET BALCONIES | PRIVATE ELEVATOR | PRIVATE FOYER

ENCLOSED AREA:	3,412 SQ FEET	317 SQ METERS
BALCONY AREA:	568 SQ FEET	53 SQ METERS
TOTAL AREA:	3,980 SQ FEET	370 SQ METERS



All plans, features, designs, dimensions, and other information contained or depicted herein are based upon preliminary development plans and are subject to change without notice due to field conditions and other matters. These materials do not reflect the final, as-built plans for the unit, or any room located therein, and may not be relied upon. All improvements, designs, and construction are subject to first obtaining the appropriate federal, state, and local permits and approvals for same. No guarantees or representations whatsoever are made that any plans, features, designs, or other items depicted or described herein will be provided or, if provided, will be of the same type, size, location or nature as depicted or described herein. The developer expressly reserves the right to make modifications, revisions, and changes it deems desirable in its sole and absolute discretion. This offering is made only by the prospectus for the condominium and no statement or information should be relied upon if not made in the prospectus. All architectural plans are and shall remain the property of the architect or developer and no rights are conferred hereby.

Stated square footages and dimensions are measured to the exterior boundaries of the exterior walls and the centerline of interior partitioning walls and in fact vary from the dimensions that would be determined by using the description and definition of the "Unit" set forth in the Declaration (which generally only includes the interior airspace between the perimeter walls and excludes all interior structural components and other common elements). This method is generally used in sales materials and is provided to allow a prospective buyer to compare the Units with units in other condominium projects that utilize the same method. For your reference, the area of the Unit, determined in accordance with these defined unit boundaries, is set forth above and is labeled as "A/C" (terraces, although included in the total square footage, are not part of the Unit). Measurements of rooms set forth on this floor plan are generally taken at the farthest points of each given room (as if the room were a perfect rectangle), without regard for any cutouts or variations. Accordingly, the area of the actual room will typically be smaller than the product obtained by multiplying the stated length and width. All dimensions are estimates which will vary with actual construction, and all floor plans, specifications, and other development plans are proposed and conceptual only, which are subject to change and will not necessarily accurately reflect the final plans and specifications for the development.

ORAL REPRESENTATIONS CANNOT BE RELIED UPON AS CORRECTLY STATING THE REPRESENTATIONS OF THE DEVELOPER. FOR CORRECT REPRESENTATIONS, MAKE REFERENCE TO THIS BROCHURE AND TO THE DOCUMENTS REQUIRED BY SECTION 718.503, FLORIDA STATUTES, TO BE FURNISHED BY A DEVELOPER TO A BUYER OR LESSEE.



# FLOORS 46-56

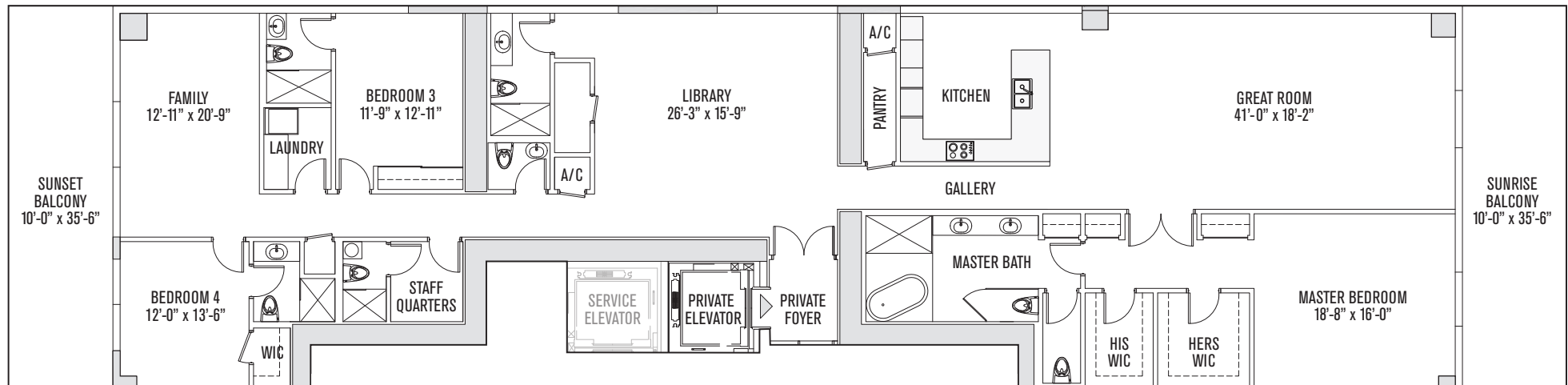
## NORTH EAST RESIDENCE

# E L Y S E E

## MIAMI

### PENTHOUSE 4 BEDROOMS / 5.5 BATHROOMS

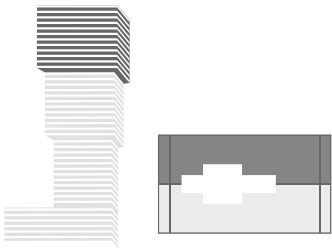
(CONVERTIBLE TO 5 OR 6 BEDROOMS)



BISCAYNE BAY

4 BEDROOMS | 5.5 BATHROOMS | GREAT ROOM | FAMILY ROOM | LIBRARY | KITCHEN | STAFF QUARTERS  
 SUNRISE & SUNSET BALCONIES | PRIVATE ELEVATOR | PRIVATE FOYER

ENCLOSED AREA:	3,979 SQ FEET	370 SQ METERS
BALCONY AREA:	710 SQ FEET	66 SQ METERS
TOTAL AREA:	4,689 SQ FEET	436 SQ METERS



All plans, features, designs, dimensions, and other information contained or depicted herein are based upon preliminary development plans and are subject to change without notice due to field conditions and other matters. These materials do not reflect the final, as-built plans for the unit, or any room located therein, and may not be relied upon. All improvements, designs, and construction are subject to first obtaining the appropriate federal, state, and local permits and approvals for same. No guarantees or representations whatsoever are made that any plans, features, designs, or other items depicted or described herein will be provided or, if provided, will be of the same type, size, location or nature as depicted or described herein. The developer expressly reserves the right to make modifications, revisions, and changes it deems desirable in its sole and absolute discretion. This offering is made only by the prospectus for the condominium and no statement or information should be relied upon if not made in the prospectus. All architectural plans are and shall remain the property of the architect or developer and no rights are conferred hereby.

Stated square footages and dimensions are measured to the exterior boundaries of the exterior walls and the centerline of interior partitioning walls and in fact vary from the dimensions that would be determined by using the description and definition of the "Unit" set forth in the Declaration (which generally only includes the interior airspace between the perimeter walls and excludes all interior structural components and other common elements). This method is generally used in sales materials and is provided to allow a prospective buyer to compare the Units with units in other condominium projects that utilize the same method. For your reference, the area of the Unit, determined in accordance with these defined unit boundaries, is set forth above and is labeled as "A/C" (terraces, although included in the total square footage, are not part of the Unit). Measurements of rooms set forth on this floor plan are generally taken at the farthest points of each given room (as if the room were a perfect rectangle), without regard for any cutouts or variations. Accordingly, the area of the actual room will typically be smaller than the product obtained by multiplying the stated length and width. All dimensions are estimates which will vary with actual construction, and all floor plans, specifications, and other development plans are proposed and conceptual only, which are subject to change and will not necessarily accurately reflect the final plans and specifications for the development.

ORAL REPRESENTATIONS CANNOT BE RELIED UPON AS CORRECTLY STATING THE REPRESENTATIONS OF THE DEVELOPER. FOR CORRECT REPRESENTATIONS, MAKE REFERENCE TO THIS BROCHURE AND TO THE DOCUMENTS REQUIRED BY SECTION 718.503, FLORIDA STATUTES, TO BE FURNISHED BY A DEVELOPER TO A BUYER OR LESSEE.

# FLOORS 46-56

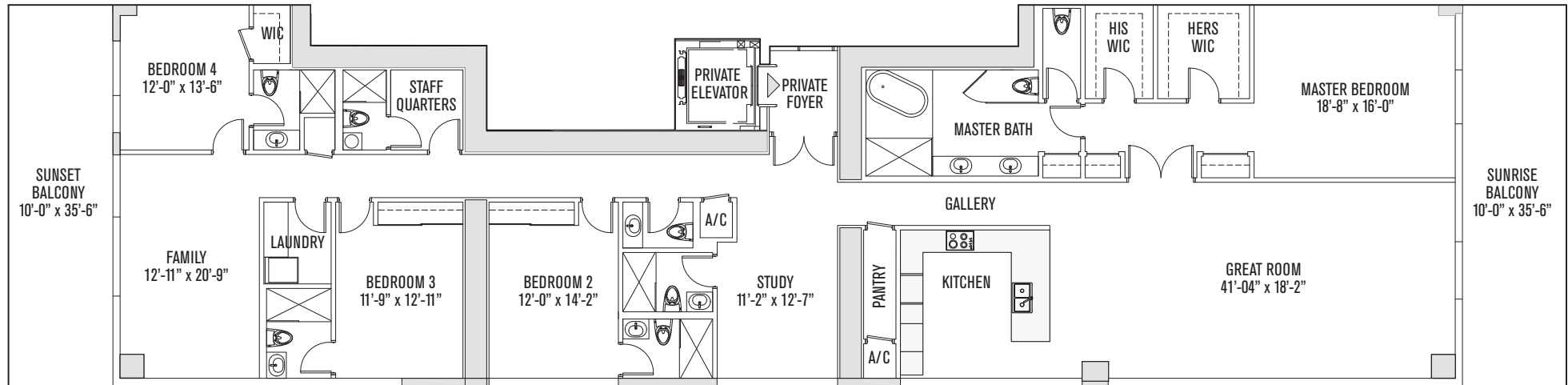
## SOUTH EAST RESIDENCE

# E L Y S E E

## MIAMI

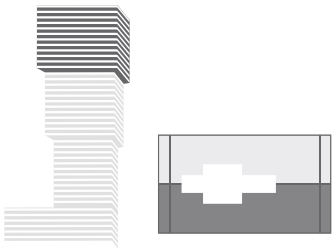
### PENTHOUSE 4 BEDROOMS / 6.5 BATHROOMS

(CONVERTIBLE TO 5 OR 6 BEDROOMS)



4 BEDROOMS | 6.5 BATHROOMS | GREAT ROOM | FAMILY ROOM | STUDY | KITCHEN | STAFF QUARTERS  
 SUNRISE & SUNSET BALCONIES | PRIVATE ELEVATOR | PRIVATE FOYER

ENCLOSED AREA:	3,979 SQ FEET	370 SQ METERS
BALCONY AREA:	710 SQ FEET	66 SQ METERS
TOTAL AREA:	4,689 SQ FEET	436 SQ METERS



All plans, features, designs, dimensions, and other information contained or depicted herein are based upon preliminary development plans and are subject to change without notice due to field conditions and other matters. These materials do not reflect the final, as-built plans for the unit, or any room located therein, and may not be relied upon. All improvements, designs, and construction are subject to first obtaining the appropriate federal, state, and local permits and approvals for same. No guarantees or representations whatsoever are made that any plans, features, designs, or other items depicted or described herein will be provided or, if provided, will be of the same type, size, location or nature as depicted or described herein. The developer expressly reserves the right to make modifications, revisions, and changes it deems desirable in its sole and absolute discretion. This offering is made only by the prospectus for the condominium and no statement or information should be relied upon if not made in the prospectus. All architectural plans are and shall remain the property of the architect or developer and no rights are conferred hereby.

Stated square footages and dimensions are measured to the exterior boundaries of the exterior walls and the centerline of interior partitioning walls and in fact vary from the dimensions that would be determined by using the description and definition of the "Unit" set forth in the Declaration (which generally only includes the interior airspace between the perimeter walls and excludes all interior structural components and other common elements). This method is generally used in sales materials and is provided to allow a prospective buyer to compare the Units with units in other condominium projects that utilize the same method. For your reference, the area of the Unit, determined in accordance with these defined unit boundaries, is set forth above and is labeled as "A/C" (Terraces, although included in the total square footage, are not part of the Unit). Measurements of rooms set forth on this floor plan are generally taken at the farthest points of each given room (as if the room were a perfect rectangle), without regard for any cutouts or variations. Accordingly, the area of the actual room will typically be smaller than the product obtained by multiplying the stated length and width. All dimensions are estimates which will vary with actual construction, and all floor plans, specifications, and other development plans are proposed and conceptual only, which are subject to change and will not necessarily accurately reflect the final plans and specifications for the development.

ORAL REPRESENTATIONS CANNOT BE RELIED UPON AS CORRECTLY STATING THE REPRESENTATIONS OF THE DEVELOPER. FOR CORRECT REPRESENTATIONS, MAKE REFERENCE TO THIS BROCHURE AND TO THE DOCUMENTS REQUIRED BY SECTION 718.503, FLORIDA STATUTES, TO BE FURNISHED BY A DEVELOPER TO A BUYER OR LESSEE.

# DESTINY

---

REAL ESTATE

+52 (55) 2558 3370

info@destiny.mx • www.destiny.mx

  / DestinyRealEstateMX